



WELCOME

October 10th 2016



Why?

Blue Growth is the European Commission's initiative to further harness the potential of Europe's oceans, seas and coasts for:



Jobs



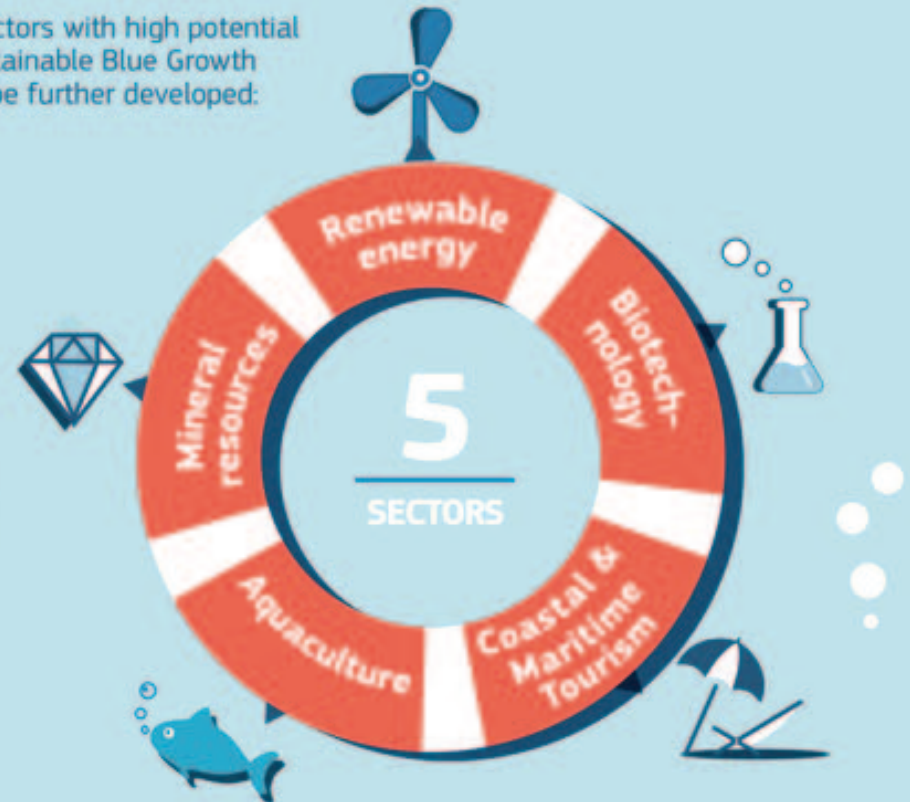
Value



Sustainability

Focus Area

Five sectors with high potential for sustainable Blue Growth are to be further developed:



HOW TO BECOME AN OFFSHORE WIND PORT?

focus on BLUE ENERGY (wave, tidal, wind)



1. CLEAR CHOICE FOR OFFSHORE WIND



2. INVEST IN THE RIGHT INFRASTRUCTURE



2. INVEST IN THE RIGHT INFRASTRUCTURE

reinforced quay & seabed



2. INVEST IN THE RIGHT INFRASTRUCTURE

jacked up next to the quay



2. INVEST IN THE RIGHT INFRASTRUCTURE

storage & pontoons for service vessels



3. ENSURE AVAILABILITY OF QUALIFIED STAFF



Falck

Safety Services

tuawest

Technische Universitaire Alliantie voor
economische transformatie in West-Vlaanderen



UGent Blue Growth
Summer School

3. ENSURE AVAILABILITY OF QUALIFIED STAFF

Falck Safety Services - boat landing



3. ENSURE AVAILABILITY OF QUALIFIED STAFF

Falck Safety Services - safety center



3. ENSURE AVAILABILITY OF QUALIFIED STAFF

Falck Safety Services - training basin



3. ENSURE AVAILABILITY OF QUALIFIED STAFF

Falck Safety Services - indoor training climbing tower



4. DRIVEN BY R&D

incubation center



building for ocean basin & towing tank

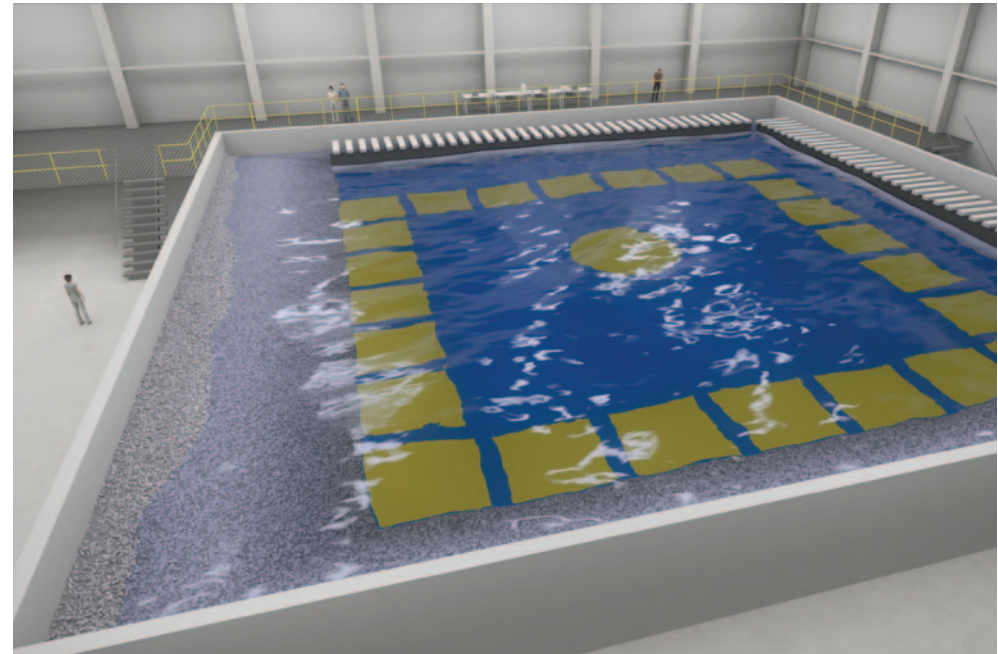


4. DRIVEN BY R&D

towing tank: 174 x 20 m



ocean basin: 30 x 30 m



5. PORT COOPERATION



- PATCH (Ports Adapting To Change)
- SEANERGY-netwerk
- Sustainable sea ports
- LOPINOD (Logistics for Ports In Need Of Development)
- BEPPO (Blue Energy Production In Ports)
- DUAL Ports

5. PORT COOPERATION

masterplan Port of Oostende



Wind[•]
EUROPE