



College of Europe
Collège d'Europe

Brugge



Natolin

POSTGRADUATE INSTITUTE OF EUROPEAN STUDIES



2021
NATOLIN CAMPUS

Your path towards a European and international career

- ▲ A postgraduate advanced Master of Arts in European Interdisciplinary Studies
- ▲ A one-year bilingual academic programme in English and French
- ▲ A focus on "Wider Europe" and on the EU's relations with its nearest neighbours
- ▲ Language courses and a tailor-made professional skills programme
- ▲ High-level events with VIP guests throughout the academic year
- ▲ Many partial or full scholarships available



More than 130 students coming from
over 30 countries

130 

students

30 

countries

About 100 professors and practitioners
from over 25 nationalities

100 

lecturers

25 

nationalities



A unique campus in
a 120-hectare nature reserve
and historical park in Warsaw

120 
hectares

2 inspiring study
trips in the EU and
its neighbourhoods

2  
study trips

A network of over 15,000
College of Europe alumni

15,000 
alumni

History

The College of Europe, established on the initiative of the Hague Congress, dates back to 1949 and is the oldest institute of European studies.

The idea was to establish an institute where university graduates from many different European countries could study and live together in preparation for careers related to European cooperation and integration.

“ For more than 70 years the College of Europe has contributed to the European integration project, providing generations of leaders the knowledge, experience and collective wisdom that enabled them to turn the dream of a unified, peaceful and prosperous continent into reality.

Federica Mogherini - Rector



Cutting-edge education

Renowned professors, small group teaching and a challenging mix of professional skills and language training, as well as study trips and international competitions define the College's extremely varied academic programme.

World leaders and international opinion makers are regular guest speakers and enter into challenging discussions with students on European and international affairs.

“ The College of Europe aims to prepare its students for a life of dedication and service. During their year of studies, our students build together a true community of diversity and mutual respect.

Ewa Ośniecka-Tamecka - Vice-Rector



1948

The Hague Congress:
Salvador de Madariaga, Winston Churchill,
Paul Henri Spaak and Alcide de Gasperi,
among others, decide to found the
College of Europe

1949

Establishment of the first College
of Europe campus in Bruges, Belgium,
offering postgraduate studies
and training in European affairs

1992

Establishment of the second College
of Europe campus in Natolin (Warsaw),
Poland, at the time of the reintegration of
the European continent after the fall of the
Iron Curtain

“ This College of Europe
at Natolin is more than
the symbol of Europe
found once again, it is the
hope represented in this
beautiful historic place.
The hope that exchanges
can multiply for greater
mutual understanding and
fraternity.

Jacques Delors - Former President
of the European Commission



The College of Europe in Natolin with its postgraduate advanced **Master of Arts in European Interdisciplinary Studies** provides graduates, young professionals and future leaders with **the wider perspective on Europe**



A Broader Programme

A first-class interdisciplinary programme taught by around 100 leading academics and practitioners from Europe and beyond

Intensive training in:

- ▲ EU Law and Governance
- ▲ European Economic Integration
- ▲ Geopolitics and International Security
- ▲ Regional Studies
- ▲ Climate Transition and Energy Governance
- ▲ Media, Technology and Politics
- ▲ History, Societies, Identities
- ▲ Intercultural Communication

To learn more about the academic programme, please visit our website:

www.coleurope.eu/eis





A Deeper Insight

Four comprehensive specialisations providing key expertise in the internal and external dimensions of European affairs, customisable according to students' interests:

- ▲ EU Public Affairs and Policies
- ▲ The EU in the World
- ▲ The EU and its Neighbours
- ▲ European History and Civilization

Study trips, international competitions, high-level lectures and VIP events providing field experience and expertise on current European challenges

A Sharper View

Thorough academic preparation, combined with language courses and a professional skills programme designed for today's competitive job market

- ▲ One-to-one career tutorials
- ▲ Professional skills workshops
- ▲ Networking events
- ▲ Language courses in English, French, Italian, German, Spanish, Polish, Russian, and Arabic

Because Europe is out there, and is an adventure to be lived

A Further Step

Two inspiring study trips in the EU and its neighbourhoods offer Natolin students a unique opportunity to immerse in topical issues on the ground, as well as acquire, assess, and confront knowledge with decision makers, key experts and leading representatives of civil society.



We believe that Europe must be learned and understood on the field. Our study trips are designed to provide students with information, encounters, lectures and other academic experiences that cannot be delivered on the campus. In this respect, they represent an irreplaceable added value to the academic programme.



On the left: second semester study trip to Tunisia. On the top: first semester study trip to Ukraine.

2 study trips

Every student participates in **two** study trips: **one** in the first semester, and **one** in the second semester. Study trips are tailor-made and vary every year depending on academic priorities and external circumstances.

The map below shows some of the previous destinations of our study trips:



A Dynamic City

Warsaw: A growing and vibrant metropolis boasting a wealth of history and culture, and an ideal starting point to discover Central and Eastern Europe



- ▲ Capital of Poland since 1596
- ▲ UNESCO World Heritage site
- ▲ Business and research hub
- ▲ FRONTEX Headquarters
- ▲ OSCE's Office for Democratic Institutions and Human Rights

**A student community
of almost 250,000 people,
with more than 65,000
international students**



Warsaw

High standards of accommodation on a wonderful campus within a historic, picturesque, 120-hectare nature reserve, close to the city center



- ▲ Single, fully equipped student rooms
- ▲ Gym and sauna
- ▲ Recreational spaces
- ▲ Outdoor sport facilities
- ▲ Restaurant: full board, 7 days/week

Natolin

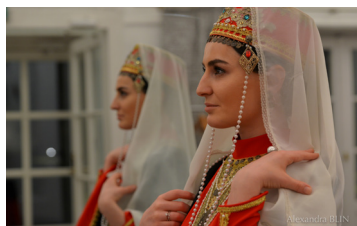
Student life at Natolin – memories for a lifetime

Natolin Blog

Welcome to Europe 360°

National Days

A showcase of diversity



A Richer Experience

A multicultural community of around 130 students from more than 30 countries living, learning, and experiencing Europe together on one campus

30 countries
130 students

Thematic Hubs and Student Societies

- ▲ Energy and Climate Governance
- ▲ Academy of Migration
- ▲ Digital and Media





The Natolin campus under the COVID-19 pandemic

Ever since the first reports on the risks of the COVID-19 pandemic appeared, the College of Europe in Natolin quickly reacted and ensured the successful completion of the academic year in June 2020.

Since mid-March 2020 a permanent taskforce continues to monitor on a regular basis the overall anti-COVID-19 strategy and its implementation in light of recommendations made by the host and other state governments, the WHO, and the European Centre for Disease Prevention and Control.

Supported by a professional epidemiologist we have taken a series of measures to welcome students and staff with the overarching goal to continue to provide a top-class educational experience in line with all sanitary and legal guidelines set by the public authorities.

Learn more at: www.coleurope.eu/covid-19/natolin



An innovative research and development environment

European Neighbourhood Policy Chair

Focuses on "Wider Europe" and on the EU's relations with its nearest neighbours, particularly the countries covered by the European Neighbourhood Policy

European Civilization Chair

Encourages reflection on European history in the conviction that understanding Europe's past helps us to imagine and shape Europe's future

International Seminars

Natolin Neighbourhood Days



International Conferences

Three Ukrainian Revolutions



Executive Education

A long track-record in providing tailored and successful executive education and training to a wide range of participants, also by means of e-learning platforms

Natolin Library

One of the largest European Studies libraries, with extensive printed and electronic collections

**From 5 to 1000
participants**

**Over
45,000 titles**



A Bigger Network

High-level lectures with VIP guests throughout the year give our students the opportunity to meet and discuss with world leaders

“ My time at the College of Europe has influenced the course of my entire career. Time spent there is an investment in the future.

Marija Pejčinović Burić -
Stefan Zweig Promotion (1993-1994)
Secretary General of the Council of Europe



A wealth of career destinations



- ▲ 25,29% | Companies, consultancies, and trade associations
- ▲ 24,85% | EU institutions and EU agencies
- ▲ 10,17% | Public sector (national, regional and sub-national)
- ▲ 12,20% | Academic institutions, think tanks, and research institutions
- ▲ 8,93% | Law firms
- ▲ 4,51% | NGOs, trade unions, and professional associations
- ▲ 6,19% | International organisations
- ▲ 4,51% | Embassies and diplomatic service
- ▲ 3,35% | Other organisations

How to become a student?



OCTOBER

**Online application open for the next academic year
at admissions.coleurope.eu**

Choose two study programmes and upload your documents (CV, motivation letter, scholarship application, two recommendation letters from professors, diplomas and transcripts, language proficiency certificates)



MID-JANUARY

**Deadline for submitting
the complete online application**



FEBRUARY-MARCH

**Preselection of
candidates**



MARCH-MAY

Interviews

In-person/online interviews with the National Committees
in the country of citizenship or online interviews
directly with the College of Europe committee



MAY-JUNE

Decisions on admissions



MAY-JULY

Decisions on scholarships



AUGUST

**Kick-off of the Summer Language Academy
and of the preparatory courses**



SEPTEMBER

Start of the academic year

Admission requirements

- ▲ Bologna Master's degree or equivalent (240 ECTS)
- ▲ Knowledge of English and French
- ▲ Interest in EU affairs

The European Interdisciplinary Studies programme is aimed at university graduates with an academic background in a varied range of disciplines, such as law, economics, political or social sciences, history, philosophy, geography, linguistics, or journalism, and who are interested in approaching the process of European integration from a broad and interdisciplinary perspective.

Graduates with degrees in other disciplines (such as natural sciences, engineering, etc.) who demonstrate a high academic level and a keen interest in EU affairs are also encouraged to apply.



The study programme corresponds to a total of 66 credits (ECTS)

Master of Arts in Transatlantic Affairs (MATA)

A unique joint degree

The 21st century brings with it numerous complex challenges for the United States and the European Union. These challenges have to be taken up by a new generation of leaders across public and private sectors. This 2-year joint Master of Arts, in cooperation with The Fletcher School of Law and Diplomacy at Tufts University, prepares graduates for positions in transatlantic leadership.

“ The College is more than a university. This institute pushes you to your limits and turns ambition into action. The values I have learned here in Natolin are the guiding lines for my actions today.

Bram Van Hecke - Manuel Marín Promotion (2018-2019)
President, Young Farmers Association in Flanders

Fees and scholarships

At the Natolin campus of the College of Europe the fees of 26,000€ include: tuition, registration, examinations, study trips, language courses, full board (7 days/week) and accommodation, as well as on-campus sports facilities.

Students are insured by the College against accidents occurring on campus during their stay, with first aid / emergency medical care ensured. For incidents occurring off-campus, students must insure themselves personally.

Many of our students are granted partial or full scholarships. The list below represents countries and regions as well as public or private institutions granting scholarships:

- ▲ Andorra
- ▲ Belgium (Government of Flanders for candidates from Eastern Partnership countries)
- ▲ China (China Scholarship Council)
- ▲ Czech Republic
- ▲ Denmark
- ▲ France
- ▲ Germany (Government, Land Thuringia, Land North Rhine-Westphalia and Land Bade-Wurtemberg)
- ▲ Hungary
- ▲ Ireland
- ▲ Italy
- ▲ Luxembourg
- ▲ Malta
- ▲ Monaco
- ▲ North Macedonia
- ▲ Norway
- ▲ Poland (for Polish citizens, Ukrainian citizens, and citizens of the Western Balkans)
- ▲ Portugal (Government and Azores Islands)
- ▲ Spain (Government, Regions of Biscay, Catalonia and Valencia, Canary Islands, Fundación Ramón Areces)
- ▲ Sweden
- ▲ Switzerland
- ▲ Turkey (Government / private sector and Jean Monnet Scholarship Programme)
- ▲ United Kingdom (British and Scottish Governments, Brunat Scholarships)



About **70%** of College of Europe students are granted scholarships

Apply for one of our scholarships

Thanks to support from the European Union, the College of Europe in Natolin also awards the following scholarships (ranging from partial to full):

European History and Civilization Scholarships

Beneficiaries:

- ▲ Candidates from all nationalities
- ▲ Graduates in history and related disciplines

Eligibility:

- ▲ On the basis of motivation and merit

European Neighbourhood Policy Scholarships (EU citizens)

Beneficiaries:

- ▲ Candidates from EU countries
- ▲ Interested in the European Neighbourhood Policy

Eligibility:

- ▲ On the basis of motivation and merit

European Neighbourhood Policy Scholarships (ENP countries citizens)

Beneficiaries:

- ▲ Candidates from Algeria, Armenia, Azerbaijan, Belarus, Egypt, Georgia, Israel, Jordan, Lebanon, Libya, Moldova, Morocco, Palestine, Syria, Tunisia or Ukraine

Eligibility:

- ▲ On the basis of motivation and merit

To learn more about all the available scholarship schemes, please visit our website:

www.coleurope.eu/scholarships





College of Europe
Collège d'Europe

Brugge



Natolin

Widen your perspective!

BECOME PART OF THE COLLEGE NETWORK
COLEUROPE.EU/SOCIALHUB



With the support of the
Erasmus+ Programme
of the European Union

The project has been funded with support
from the European Commission

COLLEGE OF EUROPE IN NATOLIN

College of Europe | Ulica Nowoursynowska 84 | 02-797 Warsaw | Poland
T +48 22 54 59 500 / 401 | F +48 22 54 59 352 | contactnatolin@coleurope.eu

COLEUROPENATOLIN.EU
COLEUROPE.EU